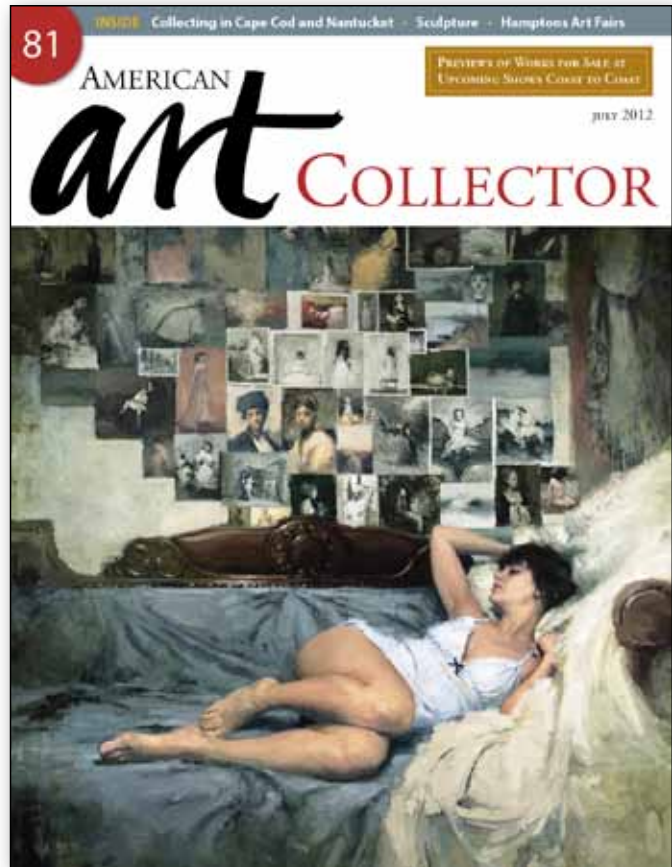


As seen in the
July 2012 issue of

 AMERICAN
art COLLECTOR



UPCOMING SHOW

Up to 20 works

July 6-29, 2012

Dowling Walsh Gallery

357 Main Street

Rockland, ME 04841

(207) 596-1184

• SHOW LOCATION ROCKLAND, ME



CONNIE HAYES

Abandon, absorption and entrancement

For many years, Connie Hayes has painted landscapes and interior scenes that were largely unpopulated and based on color and gesture. Recently, she has had a chance to closely observe a group of children at play over an extended period of time and the experience has led her to begin experimenting with figurative work.

“These paintings are not portraits,” says Hayes. “Traditional likeness is less my pursuit than believable distillation. I have been observing children playing, eating and reading and I see them in states of abandon, absorption and entrancement.”

What Hayes saw when observing these children was an ability to become completely absorbed in a moment—whether it be while eating, playing or reading—and she discovered that this is what happens to her as well while in the process of painting.

“They are really enjoying it and it looks like there is nothing else in the world but that moment,” says Hayes. “And that is the way I feel when I paint. It feels like time disappears and I get totally absorbed in color, the creative process. That’s just the zone you get into. I seek out that frame of mind, that energy, and I find that children go there naturally.”

Hayes favors a painterly approach that she refers to as poetic reduction.

“All of this work has fueled my interest and understanding in the human figure mixed with a love of color and the process of not painting every detail,” says Hayes. “To me, gesture is more important than all of the detail and by doing so you leave room for people to get into the painting and wander around a bit. Not everything has to be perfect but it needs to feel right. While I’m painting I have in the air color, structure, placement all at once and the trick is to find out how they all will gel.” ●



Blue Scooter, oil on canvas, 40 x 30"

For a direct link to the
exhibiting gallery go to 
www.americanartcollector.com



Going Out, oil on canvas, 30 x 40"



Paying Attention, oil on canvas, 20 x 20"



I'm Ready, oil on canvas, 36 x 36"